

15° - 18° ANDAR

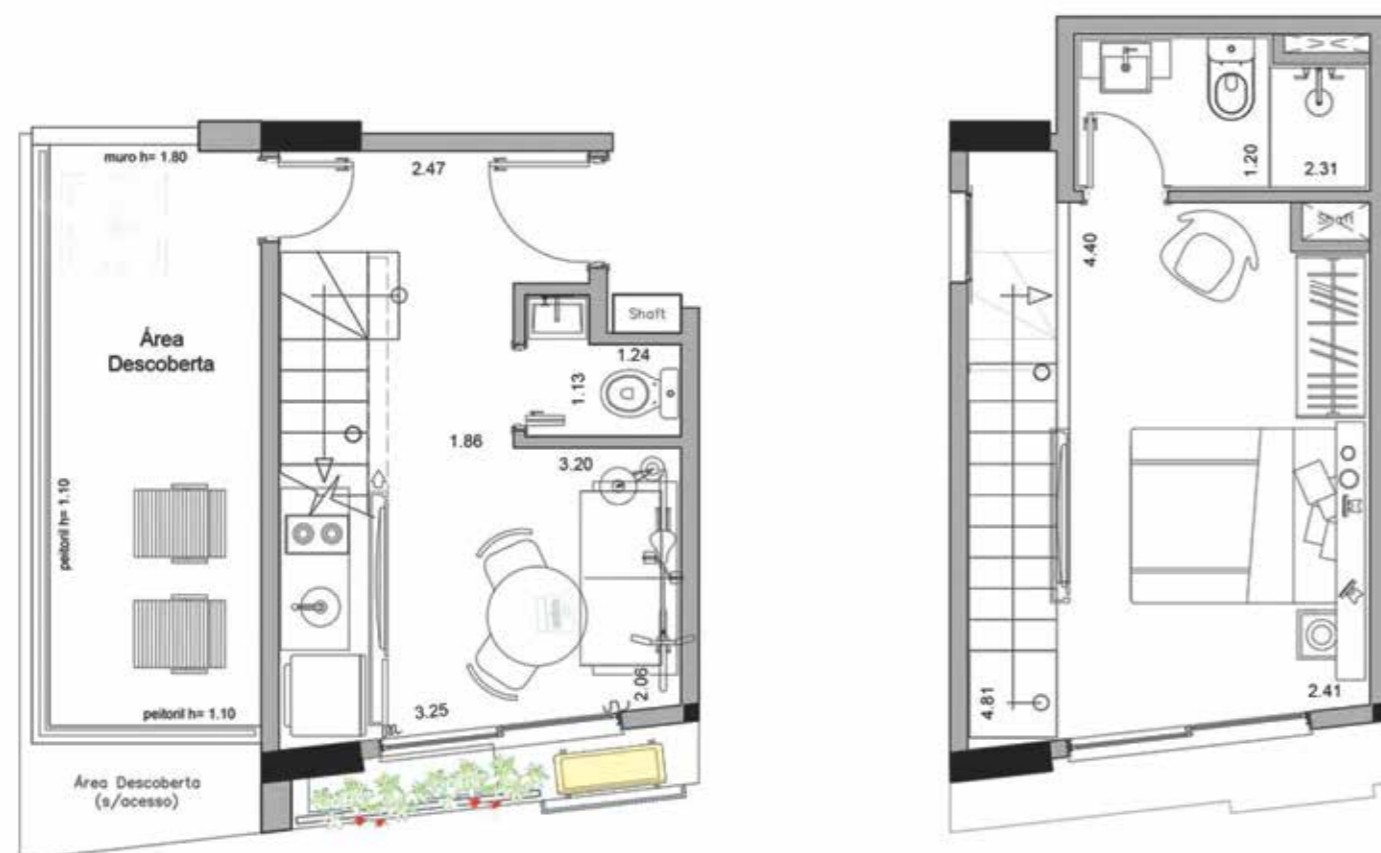
Lofts Pé Direito 5,12 m



UNIDADE STUDIO PD DUPLO

FINAL 01 - ANDAR TIPO 15°

**43,69 m² (19,54 m² inferior +
17,25 m² superior + 6,90 m² descoberto)**



UNIDADE STUDIO PD DUPLO

FINAL 02 - ANDAR TIPO 15°

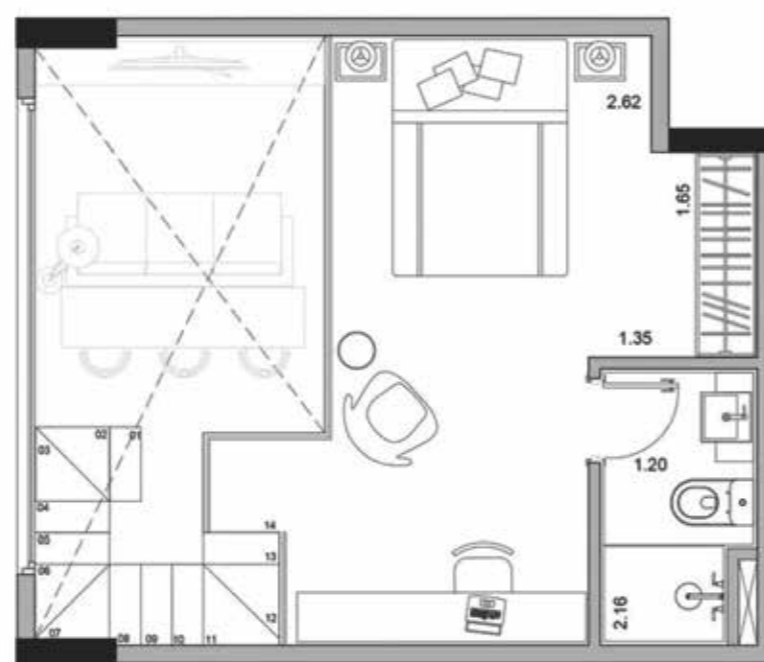
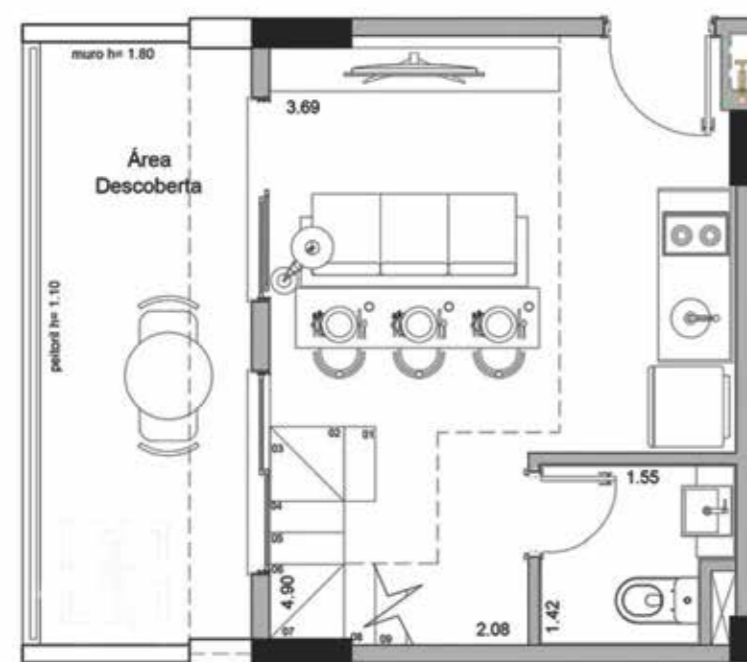
**45,65 m² (20,84 m² inferior +
18,38 m² superior + 6,43 m² descoberto)**



UNIDADE STUDIO PD DUPLO

FINAL 03 - ANDAR TIPO 15°

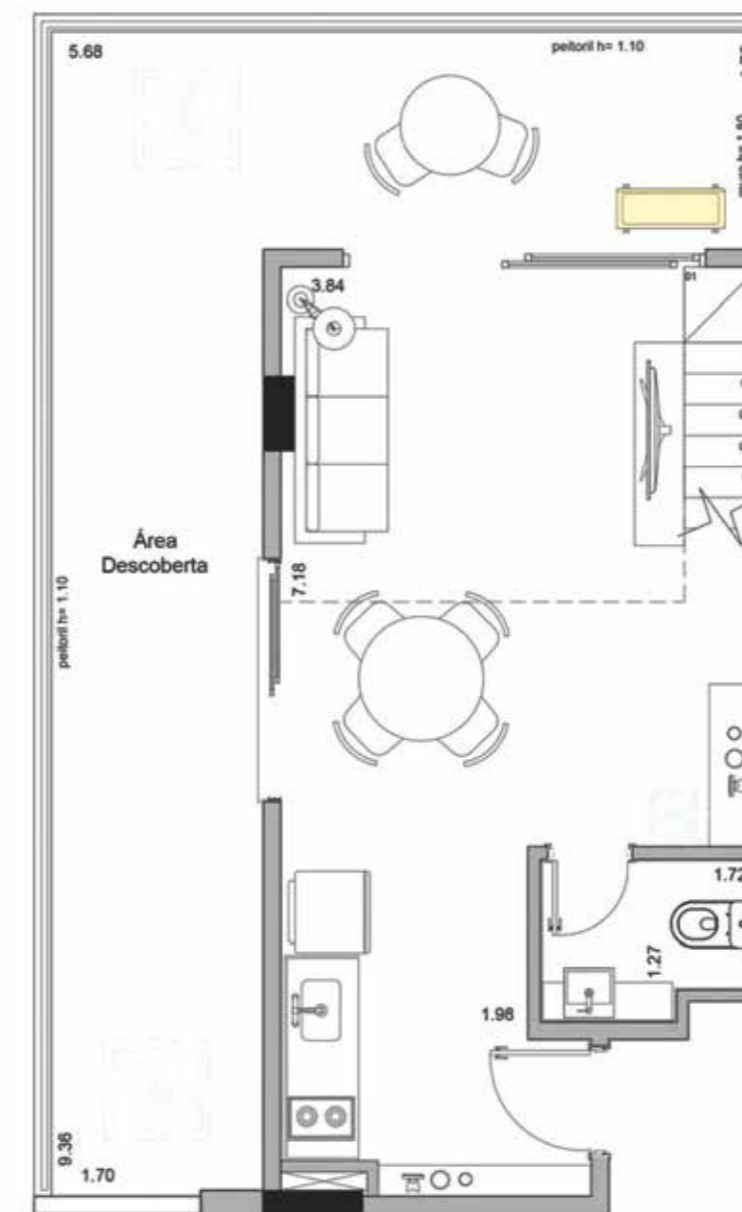
**45,65 m² (20,84 m² inferior +
18,38 m² superior + 6,43 m² descoberto)**



UNIDADE STUDIO PD DUPLO

FINAL 02 - ANDAR TIPO 15°

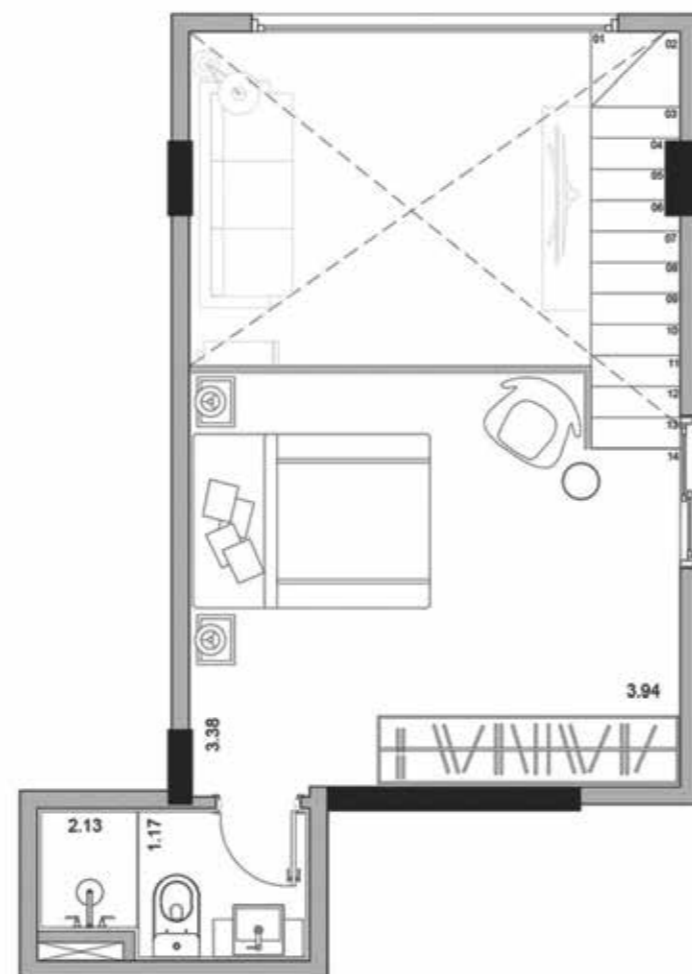
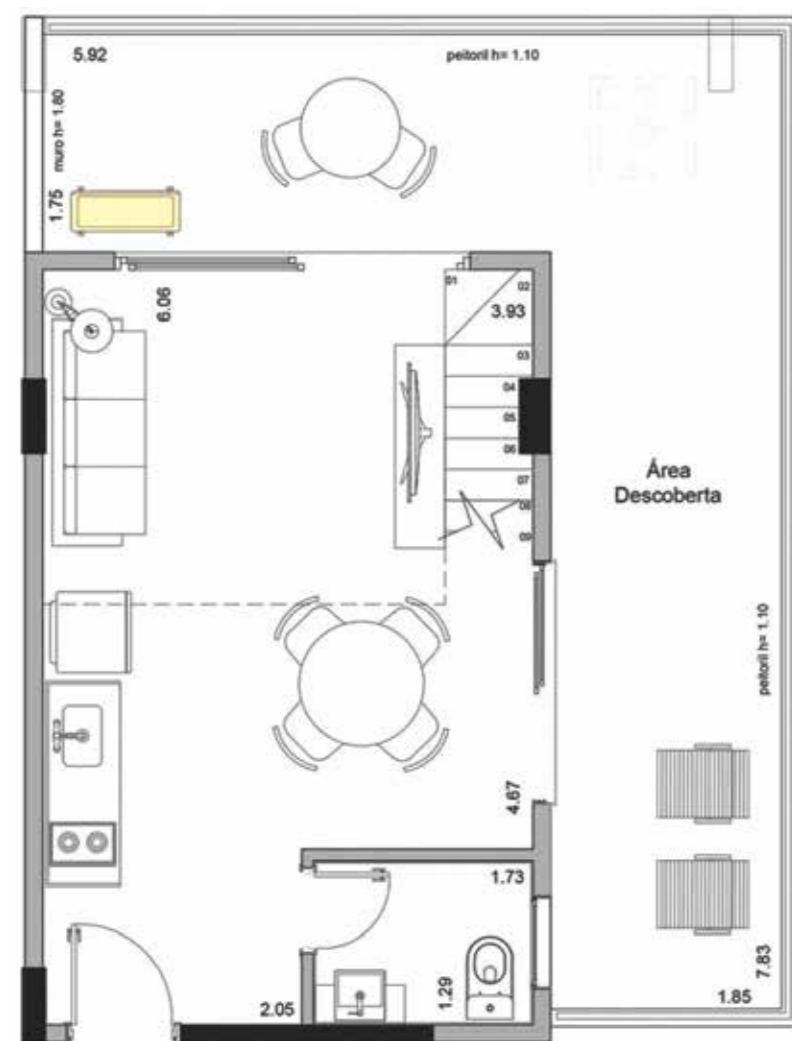
**69,69 m² (29,62 m² inferior +
22,74 m² superior + 17,33 m² descoberto)**
Opção de layout 03



UNIDADE STUDIO PD DUPLO

FINAL 05 - ANDAR TIPO 15°

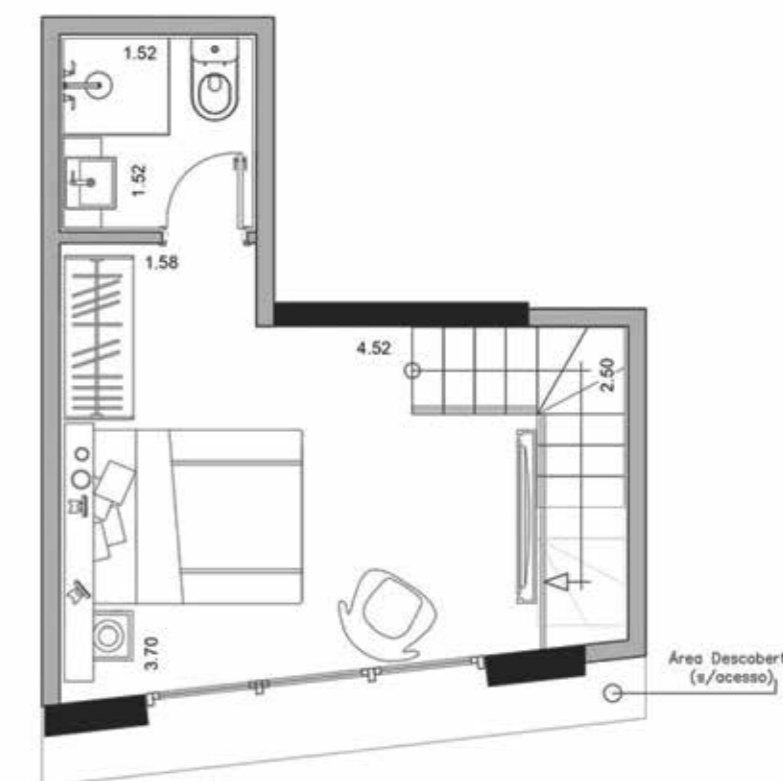
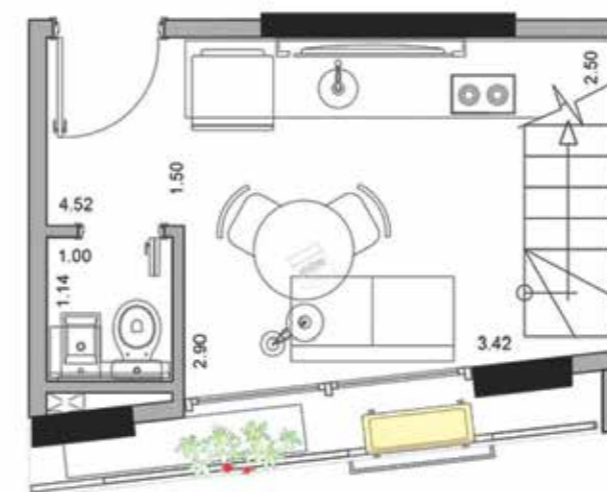
64,00 m² (27,75 m² inferior + 22,74 m² superior + 15,51 m² descoberto)



UNIDADE STUDIO PD DUPLO

FINAL 06 - ANDAR TIPO 15°

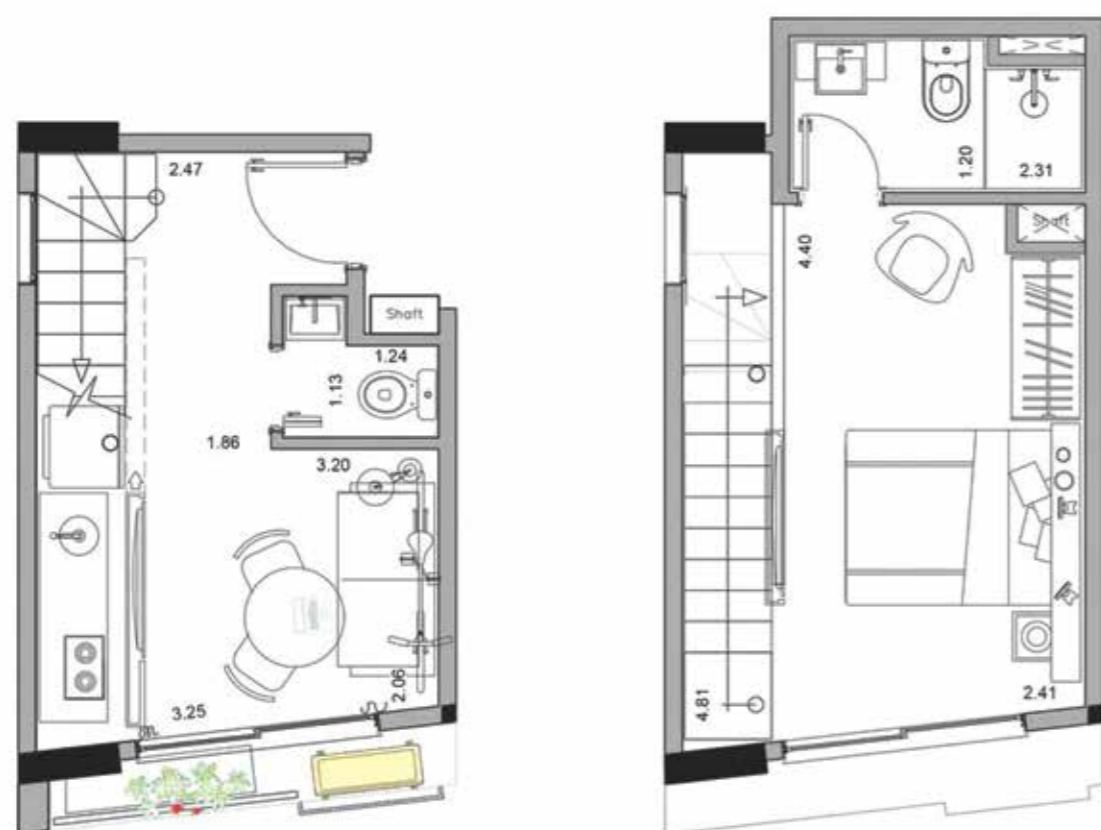
33,90 m² (16,69 m² inferior + 17,21 m² superior)



UNIDADE STUDIO PD DUPLO

FINAL 01 - ANDAR TIPO 16° E 17°

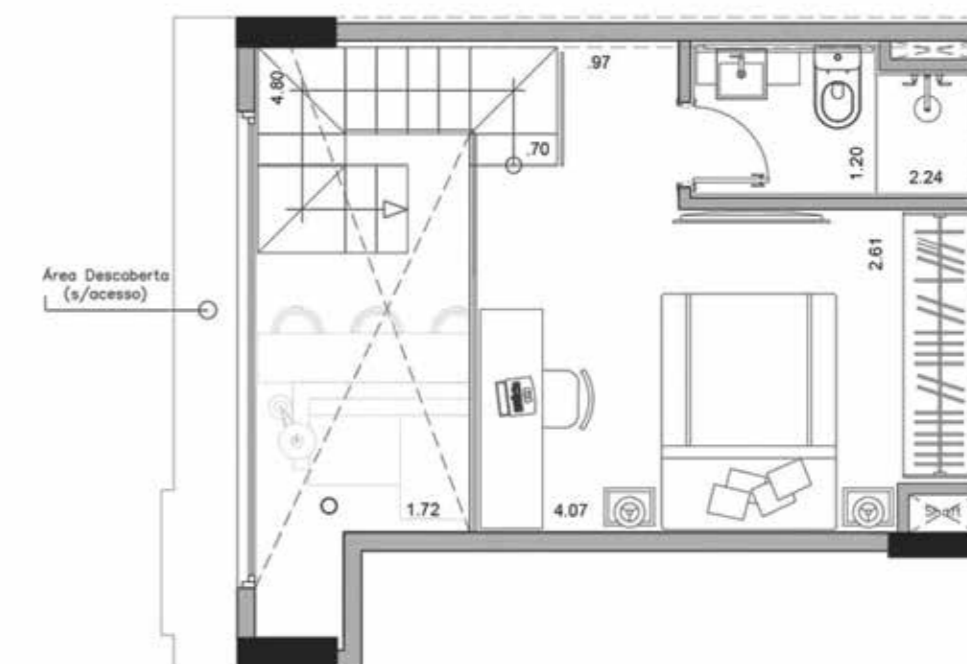
35,39 m² (19,54 m² inferior + 15,85 m² superior)



UNIDADE STUDIO PD DUPLO

FINAL 02 - ANDAR TIPO 16° E 17°

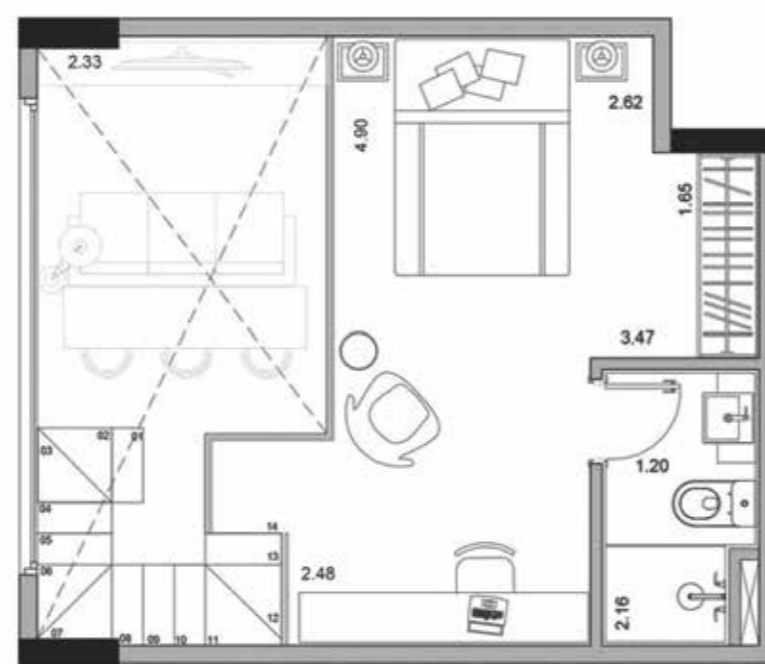
38,88 m² (22,80 m² inferior + 16,08 m² superior)



UNIDADE STUDIO PD DUPLO

FINAL 03 - ANDAR TIPO 16° E 17°

38,88 m² (22,80 m² inferior + 16,08 m² superior)



UNIDADE STUDIO PD DUPLO

FINAL 04 - ANDAR TIPO 16° E 17°

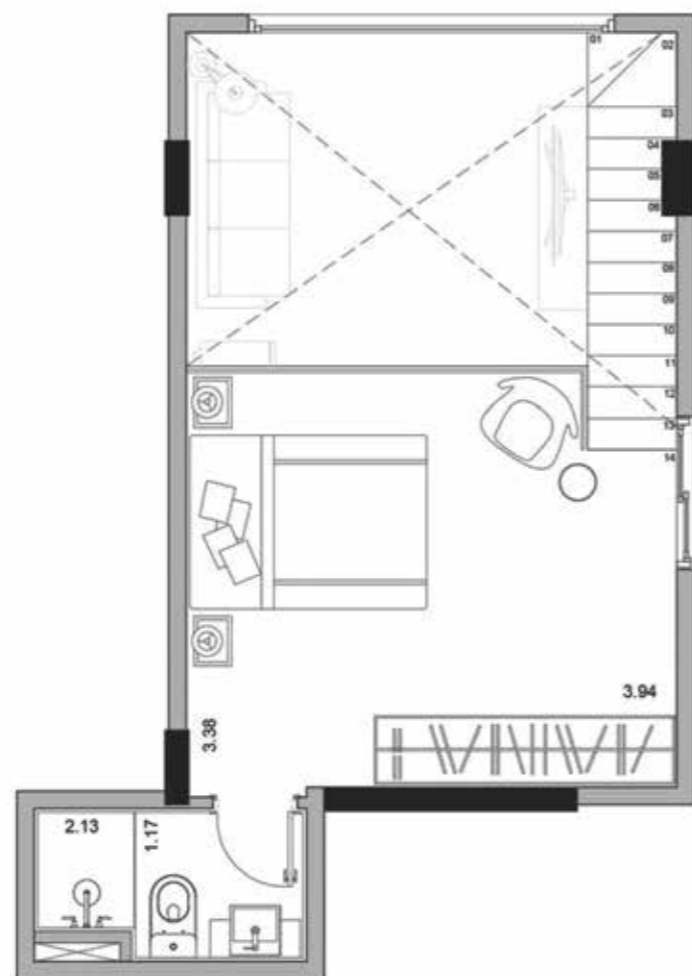
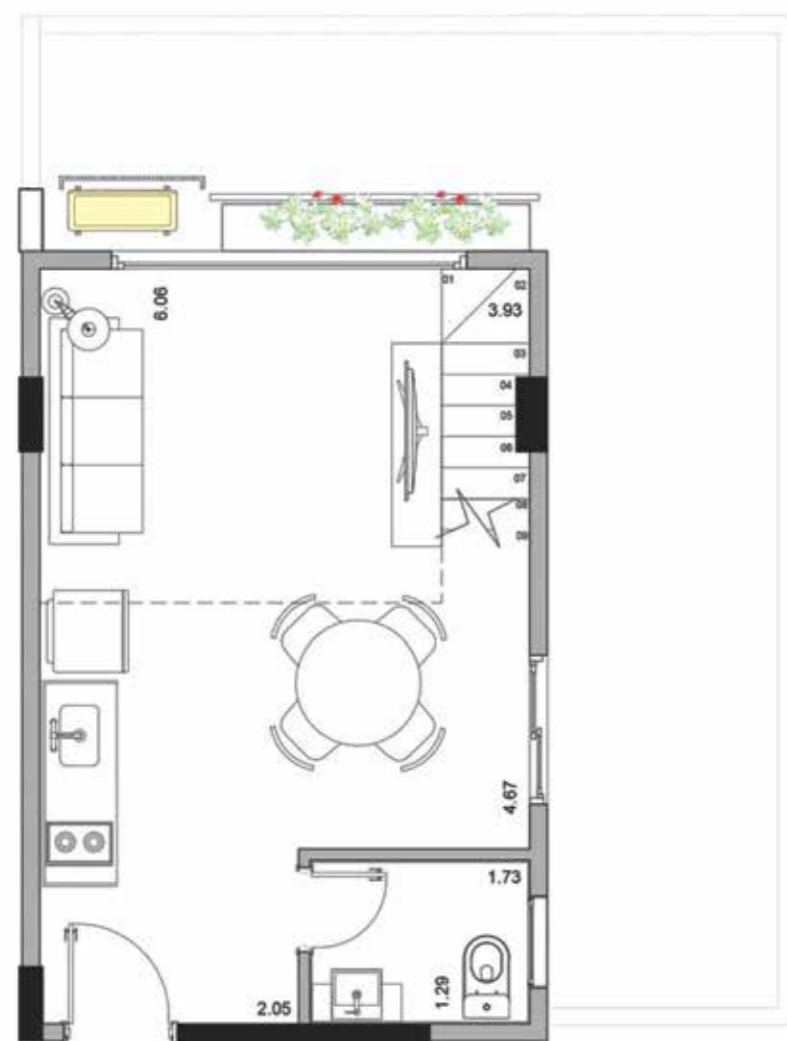
47,41 m² (31,22 m² inferior + 16,19 m² superior)
Opção de layout 03



UNIDADE STUDIO PD DUPLO

FINAL 05 - ANDAR TIPO 16° E 17°

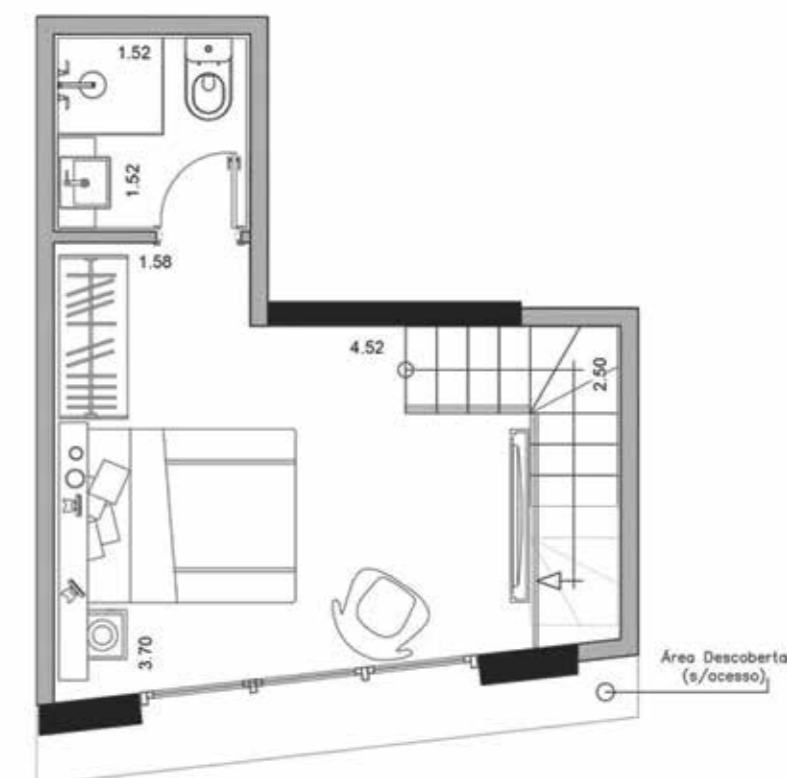
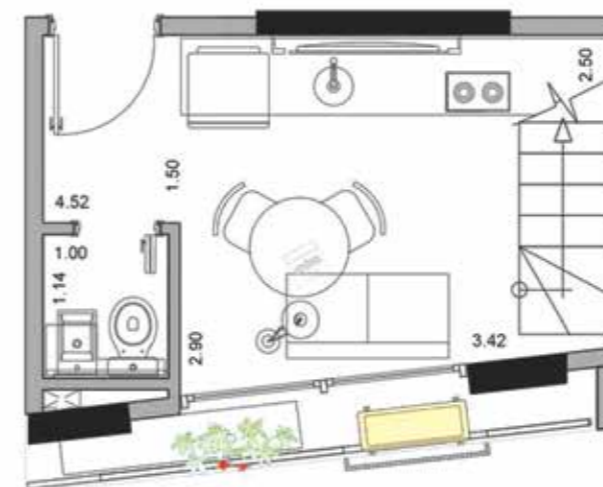
43,59 m² (27,41 m² inferior + 16,18 m² superior)



UNIDADE STUDIO PD DUPLO

FINAL 06 - ANDAR TIPO 16° E 17°

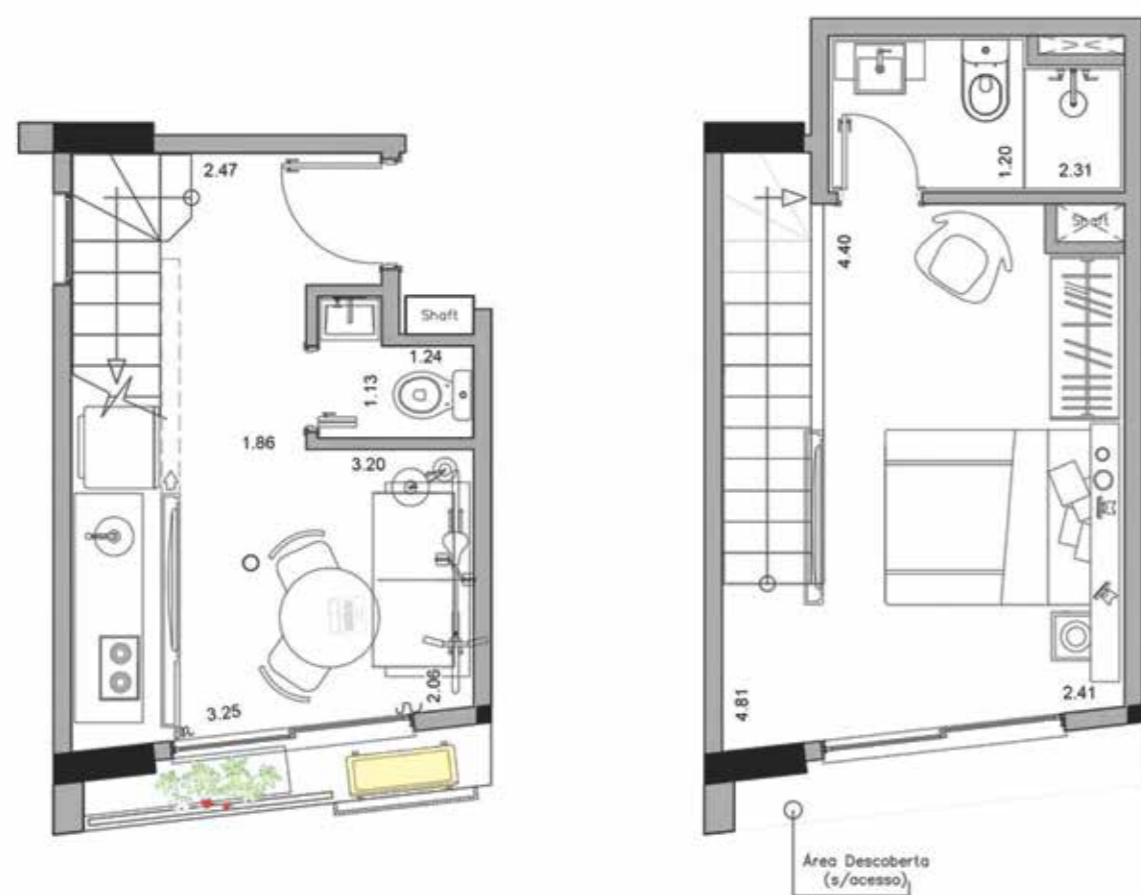
33,90 m² (16,69 m² inferior + 17,21 m² superior)



UNIDADE STUDIO PD DUPLO

FINAL 01 - ANDAR TIPO 18°

32,39 m² (17,87 m² inferior + 14,52 m² superior)



UNIDADE STUDIO PD DUPLO

FINAL 02 - ANDAR TIPO 18°

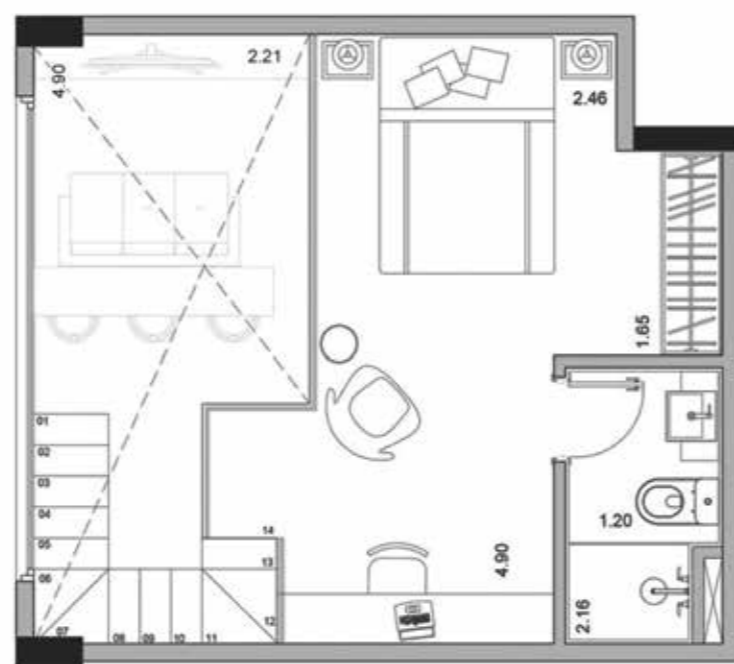
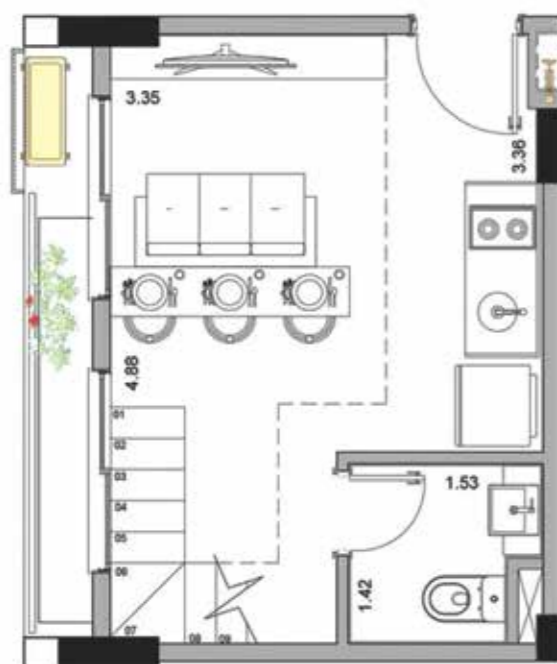
40,12 m² (21,48 m² inferior + 18,64 m² superior)



UNIDADE STUDIO PD DUPLO

FINAL 03 - ANDAR TIPO 18°

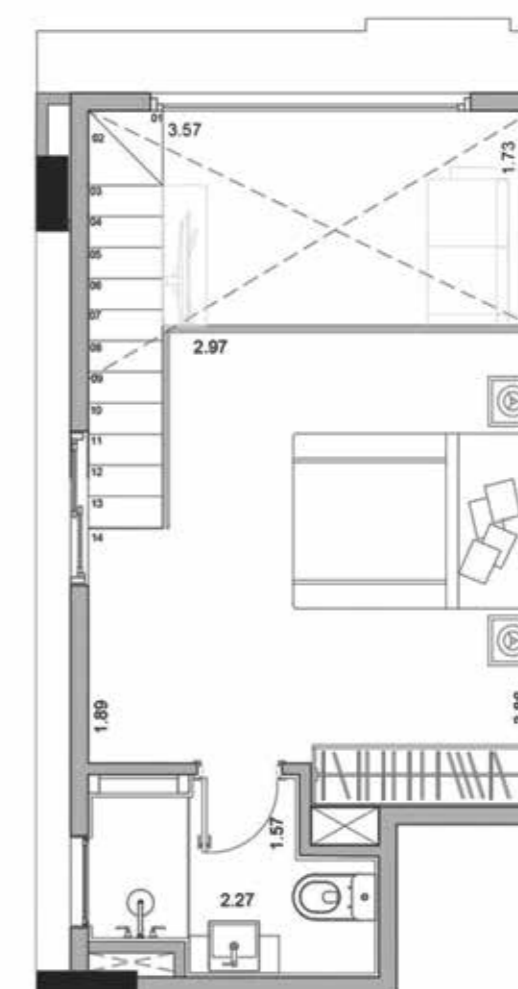
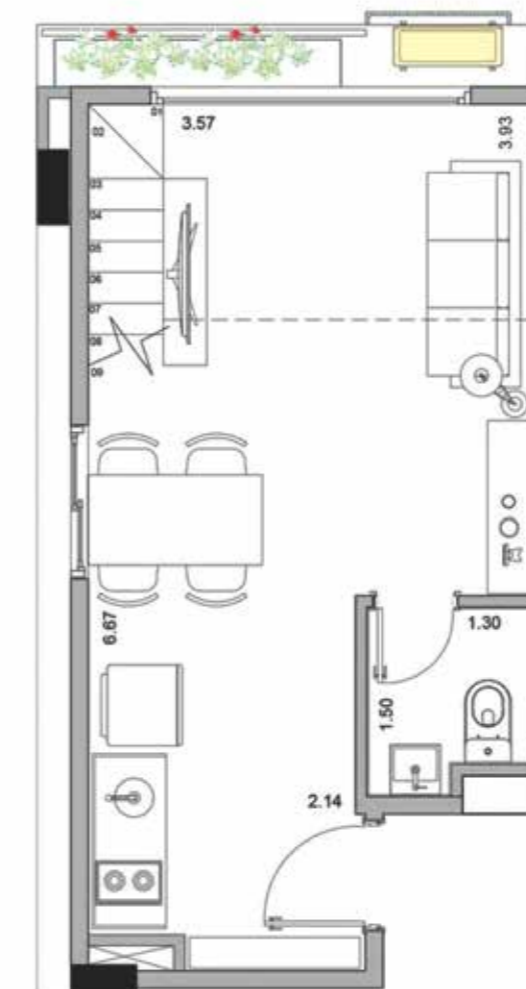
40,23 m² (21,59 m² inferior + 18,64 m² superior)



UNIDADE STUDIO PD DUPLO

FINAL 02 - ANDAR TIPO 18°

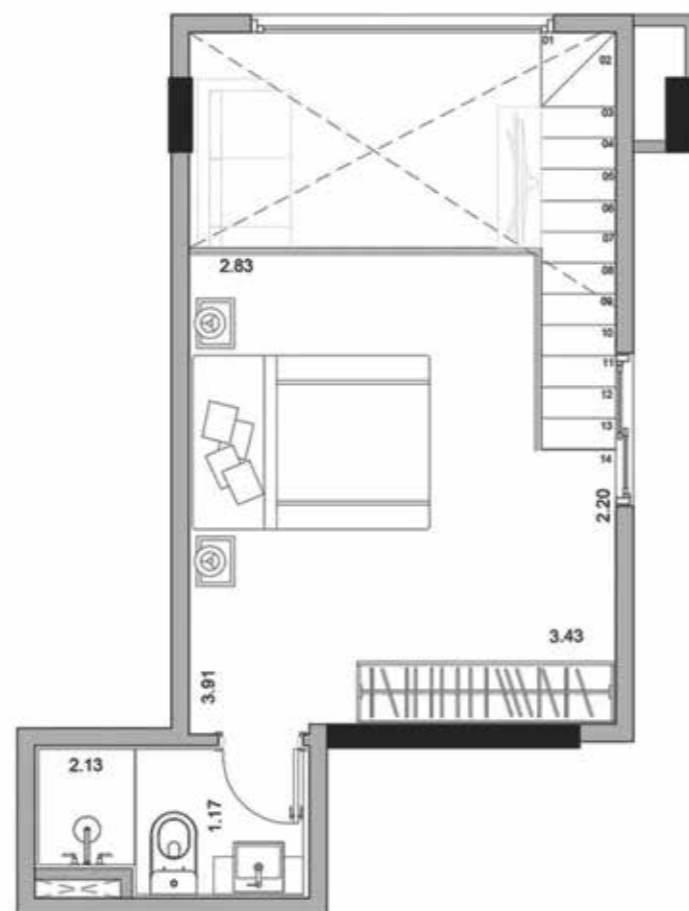
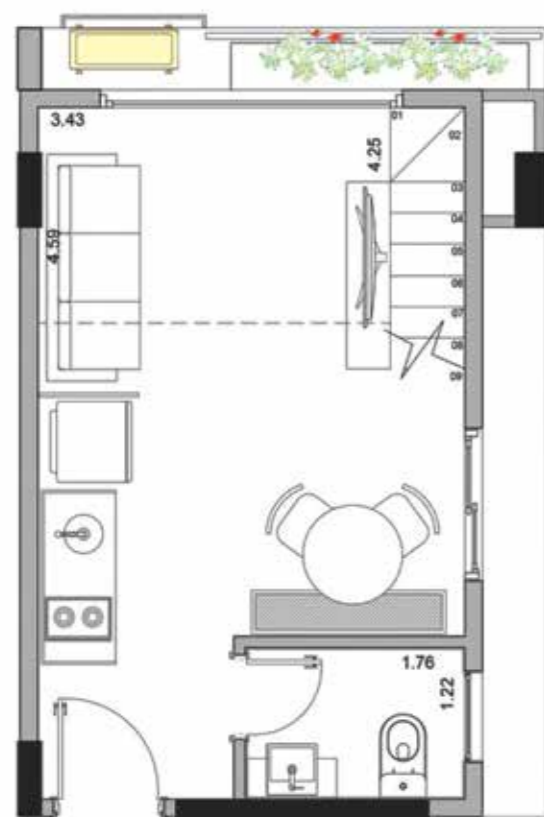
42,87 m² (24,56 m² inferior + 18,31 m² superior)



UNIDADE STUDIO PD DUPLO

FINAL 05 - ANDAR TIPO 18°

40,79 m² (22,48 m² inferior + 18,31 m² superior)



UNIDADE STUDIO PD DUPLO

FINAL 06 - ANDAR TIPO 18°

28,56 m² (14,32 m² inferior + 14,24 m² superior)

